

ANDHRA PRADESH RURAL

All analysis based on data from 22 out of 22 districts

Enrollment

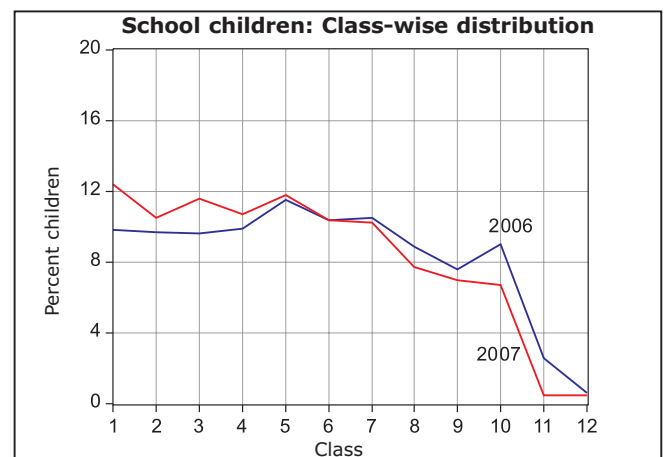
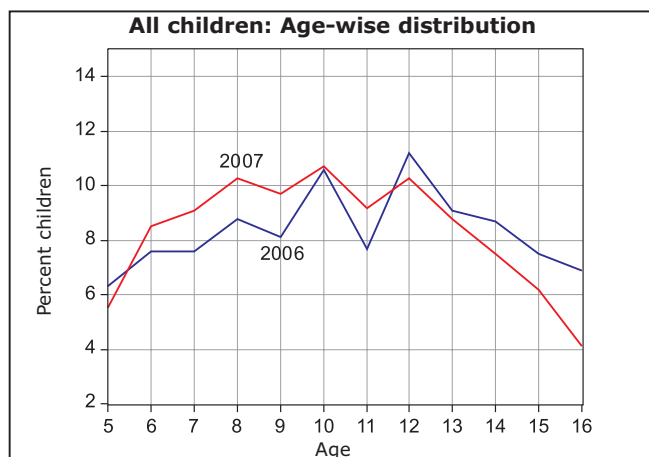
School enrollment and out of school children 2006 vs. 2007

	2006					2007				
	% Children in each age group in different types of schools				% Out of school	% Children in each age group in different types of schools				% Out of school
	Govt.	Pvt.	Other (Madarsa + EGS)	Not in School		Total	Govt.	Pvt.	Other (Madarsa + EGS)	
Age: 6 -14 ALL	77.1	18.5	0.2	4.2	100	66.1	29.3	0.4	4.3	100
Age: 7-16 ALL	76.4	16.8	0.2	6.6	100	65.5	27.1	0.4	6.9	100
Age: 7- 10 ALL	76.7	21.4	0.3	1.6	100	65.7	32.0	0.5	1.9	100
Age: 7-10 BOYS	75.1	23.3	0.3	1.3	100	61.9	35.8	0.4	1.9	100
Age: 7-10 GIRLS	78.4	19.5	0.3	1.9	100	69.1	28.4	0.5	1.9	100
Age: 11-14 ALL	79.2	13.6	0.1	7.1	100	68.6	23.6	0.4	7.4	100
Age: 11-14 BOYS	78.6	15.8	0.1	5.6	100	65.5	27.4	0.4	6.7	100
Age: 11-14 GIRLS	79.9	11.4	0.1	8.6	100	71.5	20.0	0.4	8.1	100
Age: 15-16 ALL	68.5	13.8	0.1	17.6	100	54.5	20.5	0.5	24.6	100
Age: 15-16 BOYS	69.4	14.0	0.1	16.5	100	54.1	22.0	0.4	23.5	100
Age: 15-16 GIRLS	67.4	13.6	0.1	19.0	100	54.9	19.0	0.5	25.6	100

Note: "Not in school" includes children who have never gone to school or have dropped out.

Age and Class

Age-wise and class-wise distribution of children in sample



Young Children

In pre-school (Balwadi/Anganwadi) or in school 2006 vs. 2007

	2006					2007						
	In balwadi or anganwadi	% Children			Not going anywhere	Total	In balwadi or anganwadi	% Children			Not going anywhere	Total
		Govt.	Pvt.	Other School				Govt.	Pvt.	Other School		
Age: 3 ALL	79.4				20.6	100	75.7				24.3	100
Age: 4 ALL	88.5				11.5	100	81.7				18.3	100
Age: 5 ALL	35.3	37.9	23.2	0.1	3.6	100	25.5	30.4	38.4	0.8	5.0	100
Age: 6 ALL	8.6	61.7	27.3	0.1	2.2	100	2.6	55.2	39.8	0.5	1.9	100

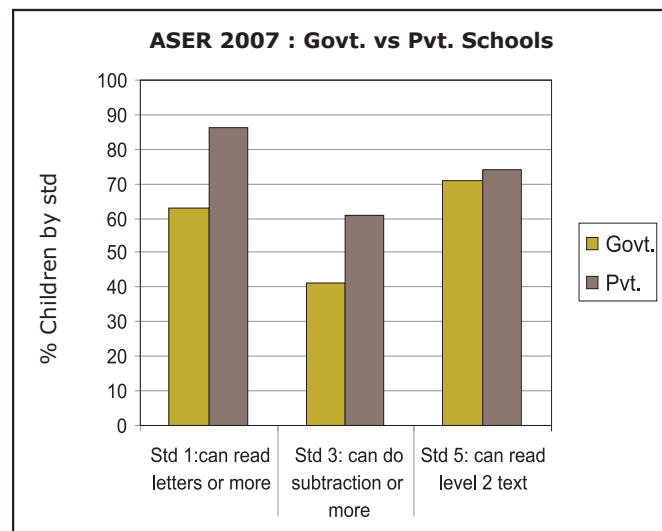
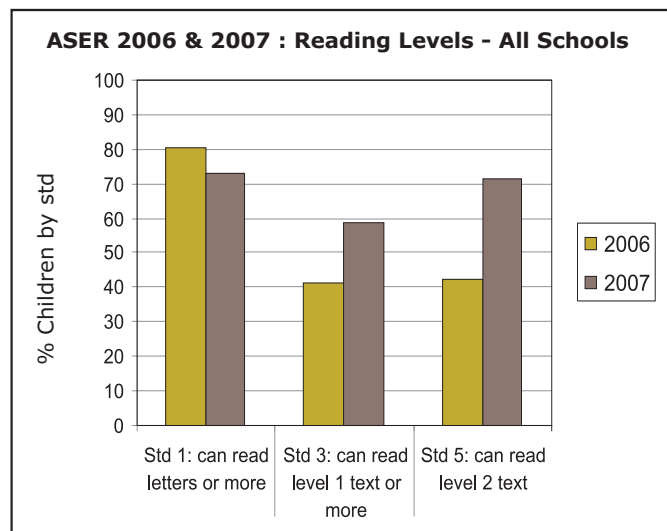
Learning Level

Reading level: % Children who can read						
Std.	Nothing	Letter	Word	Level 1 (Std 1) Text	Level 2 (Std 2) text)	Total
I	26.8	43.3	22.7	4.3	2.8	100
II	9.3	25.2	39.3	13.6	12.6	100
III	4.5	10.8	26.0	23.4	35.4	100
IV	2.1	5.3	14.0	22.1	56.5	100
V	1.1	3.1	9.0	15.3	71.5	100
VI	1.1	2.9	6.3	13.4	76.3	100
VII	1.0	1.8	4.2	10.7	82.4	100
VIII	0.7	1.4	3.5	7.4	87.0	100
Total	6.3	12.6	16.3	14.0	50.8	100

Arithmetic level: % Children who can						
Std.	Nothing	Recognize Numbers		Subtract	Divide	Total
		1-9	10-99			
I	22.1	36.8	36.7	3.5	0.9	100
II	5.5	17.5	55.3	19.2	2.4	100
III	2.1	8.4	42.6	35.0	12.0	100
IV	1.4	3.4	27.3	37.4	30.6	100
V	0.7	2.1	19.3	31.3	46.7	100
VI	0.7	1.7	17.3	27.7	52.7	100
VII	0.8	1.7	15.1	25.6	56.9	100
VIII	0.5	0.7	15.2	26.2	57.4	100
Total	4.6	9.8	29.3	25.5	30.8	100

Only subtraction and division data comparable with previous ASER.

Comparisons



English reading level: % Children who						
Std.	Cannot read capital letters	Can read capital letters	Can read small letters	Can read simple words	Can read easy sentences	Total
I	51.7	16.1	15.5	11.4	5.4	100
II	34.8	21.7	18.6	15.3	9.8	100
III	18.7	19.0	23.8	25.8	12.8	100
IV	7.8	10.5	22.6	37.8	21.3	100
V	5.3	7.1	14.1	42.3	31.1	100
VI	2.9	5.1	12.1	32.3	47.5	100
VII	2.4	3.2	9.4	25.4	59.6	100
VIII	1.4	2.2	8.6	19.6	68.3	100
Total	16.4	11.0	15.9	26.6	30.2	100

English comprehension		
Std.	Of those who can read words, % who can tell meaning of the words	Of those who can read sentences, % who can tell meaning of sentences
I	58.7	58.5
II	64.6	64.8
III	69.2	71.8
IV	71.3	72.9
V	78.0	72.4
VI	72.1	77.3
VII	70.5	82.8
VIII	65.8	82.9
Total	71.0	77.4

Comprehension & Problem solving

Ability of children by reading level to read and answer orally

Children in age group : 6 to 10				Children in age group : 11 to 14			
Reading level	% Children in specific reading level	% at each level who can orally answer questions		Reading level	% Children in specific reading level	% at each level who can orally answer questions	
		based on Std 1 level text only	based on Std 2 level text			based on Std 1 level text only	based on Std 2 level text
Word	22.7	8.3	3.5	Word	5.4	22.7	13.5
Std 1 level text	16.0	67.1	18.4	Std 1 level text	11.7	73.6	30.9
Std 2 level text	36.1	92.0	84.5	Std 2 level text	79.5	95.1	91.7

Ability of children by age to listen to a subtraction problem and answer

In-school children			
Age group	% Children who can solve		
	None	Simple problem only	Both problems
6 to 8	73.4	6.9	19.0
9 to 10	31.9	9.4	57.1
11 to 14	14.9	8.2	75.1

Children not in-school			
Age group	% Children who can solve		
	None	Simple problem only	Both problems
6 to 8	90.3	5.6	4.1
9 to 10	63.5	6.0	28.5
11 to 14	42.1	11.2	45.2

రాజా రంగా మాటాడంగా

రామా వనజా ఆటాడంగా.

చిటపట చినుకులు రాలుతుండగా
వానపాటలు పాడారు.

■ ఆటలు ఎవరు ఆడారు?
■ ఏమి పాటలు పాడారు?

అనగనగా ఒక పెద్ద అడవి. ఒక రోజు రంగయ్య కట్టలు కొట్టడానికి అడవిలోనికి వెళ్ళాడు. దారిలో అతనికి ఒక చిలుక కనిపించింది. అది చలికి వణుకుతూ ఉంది. రంగయ్య చిలుకను చూసి అయ్యో అని జాతి పడి ఇంటికి తీసుకొని వెళ్ళాడు. చిలుక కాలికి గాయం అయి ఉంది. అది చూసి రంగయ్య ఆ గాయానికి మందు రాసి కట్టుకట్టాడు. కొద్ది రోజులకు గాయం మాసింది. రంగయ్య రోజూ చిలుకకు జామపండు తినిపించేవాడు. రంగయ్య భార్యకు కూడా చిలుక బాగా నచ్చి రోజూ మాటలు నేర్చేది. ఎవరైనా రంగయ్య ఇంటికిరాగానే చిలుక రండి! రండి! అంటూ బాగున్నారా అని పిలుస్తుంది.

1) రంగయ్యకు ఏం కనిపించింది?
2) చిలుక ఏమంటుంది?

1. మీ వద్ద 50 రూ॥ ఉన్నాయి. దానిలో నుండి 35 రూ॥ లతో చెప్పులు కొన్నారు. మీ దగ్గర ఇంకా ఎన్ని రూ॥ లు ఉంటాయి.

2. మీ వద్ద 50 రూ॥ ఉన్నాయి. దానిలో నుండి 28 రూ॥ లతో మిఠాయిలు కొన్నారు. మీ దగ్గర ఇంకా ఎన్ని రూ॥ లు ఉంటాయి.

Ability of children by arithmetic level to listen to a subtraction problem and answer

Children in age group : 6 to 10				
Arithmetic level	% Children in specific arithmetic level	% Children in specific arithmetic level who can solve		
		None	Simple problem only	Both problems
Number recognition 10-99	37.7	79.6	7.6	11.6
Subtraction	25.8	29.7	14.7	54.0
Division	18.1	6.9	5.1	87.4

Children in age group : 11 to 14				
Arithmetic level	% Children in specific arithmetic level	% Children in specific arithmetic level who can solve		
		None	Simple problem only	Both problems
Number recognition 10-99	16.0	48.9	17.1	30.4
Subtraction	27.1	16.5	11.4	69.8
Division	54.5	2.4	4.2	92.5

School going children attending tuition class

Std.	% Children							
	I	II	III	IV	V	VI	VII	VIII
Govt. school	11.0	16.4	17.0	18.6	20.8	17.3	24.6	13.5
Pvt. school	24.8	29.0	33.1	31.5	37.6	31.7	36.7	28.5



School Observations: Schools visited - Primary (Std 1-4/5): 365; Primary+Upper-primary (Std 1-8): 214

Teacher attendance	2005		2007	
	Std. 1-4/5	Std. 1-8	Std. 1-4/5	Std. 1-8
% teachers attending (average)	80.6	80.0	86.3	84.3
% schools with no teacher present	2.1	0.6	0.0	0.0
% schools with all teachers present	50.3	30.9	59.5	33.2

Children's attendance	2005		2007	
	Std. 1-4/5	Std. 1-8	Std. 1-4/5	Std. 1-8
% enrolled children attending (average)	80.4	77.6	75.8	76.9
% schools with less than 50% enrolled children attending	5.2	1.8	4.7	2.8
% schools with 75% and more enrolled children attending	65.1	64.7	58.1	61.0

Pupil teacher ratio (median)	2005		2007	
	Std. 1-4/5	Std. 1-8	Std. 1-4/5	Std. 1-8
Based on children enrolled & teachers appointed	29.8	26.9	30.5	23.0
Based on children & teachers present	27.0	25.6	26.4	20.8

School grants and teacher grants	2006		2007*	
	Std. 2	Std. 4	Std. 2	Std. 4
	% Schools			
Teacher received TLM grant	91.0	89.3	36.5	38.1
School received school maintenance grant	91.9		33.8	

Water/toilet and midday meal	2005		2007	
	Std. 1-4/5	Std. 1-8	Std. 1-4/5	Std. 1-8
	% Schools			
Schools with no water provision	33.5	22.4	19.7	19.0
Schools with water provision but water not available	9.8	5.7	10.1	8.5
Schools with water provision and water available	56.7	71.8	70.2	72.5
Schools with no toilet provision	32.6	20.1	26.4	16.4
Schools with toilet provision but not being used	21.2	25.9	21.1	18.8
Schools with toilet provision and use	46.1	54.0	52.5	64.8
Schools with midday meal being served on that day	99.5	98.3	98.3	98.6

Multigrade classes	2007	
	Std. 1-4/5	Std. 1-8
	% Schools	
Schools in which...		
Std II class sits with another class	54.4	48.6
Std IV class sits with another class	46.9	34.6

Over 90% classes that were visited have blackboards. In over 90% of these classes, most children have textbooks, notebooks and pen or pencil.

Please note that while 2005 data was collected during ASER 2005, 2006 data reported in the Grants table was collected in ASER 2007 by asking for last year's grant information to the respondent.

Note: ASER 2007 survey was carried out in October and November 2007. One govt. school with primary grades was visited in the sampled village. If there was more than one govt. school with primary grades, then the school with the highest enrollment was visited. Hence the schools visited in the survey do not represent a random sample from the district. The school visits were generally done either on a Saturday or a Monday.

యన్న బాబి వీర గౌరవ
 నాన బాబి పెరిగి పాఠశాల రాజ్ కిని అలాంటివి అందుతుంది
 వీటగా ప్రాంతాలు నానా వివరాలు తెలుపు
 తుంటుంది నానా

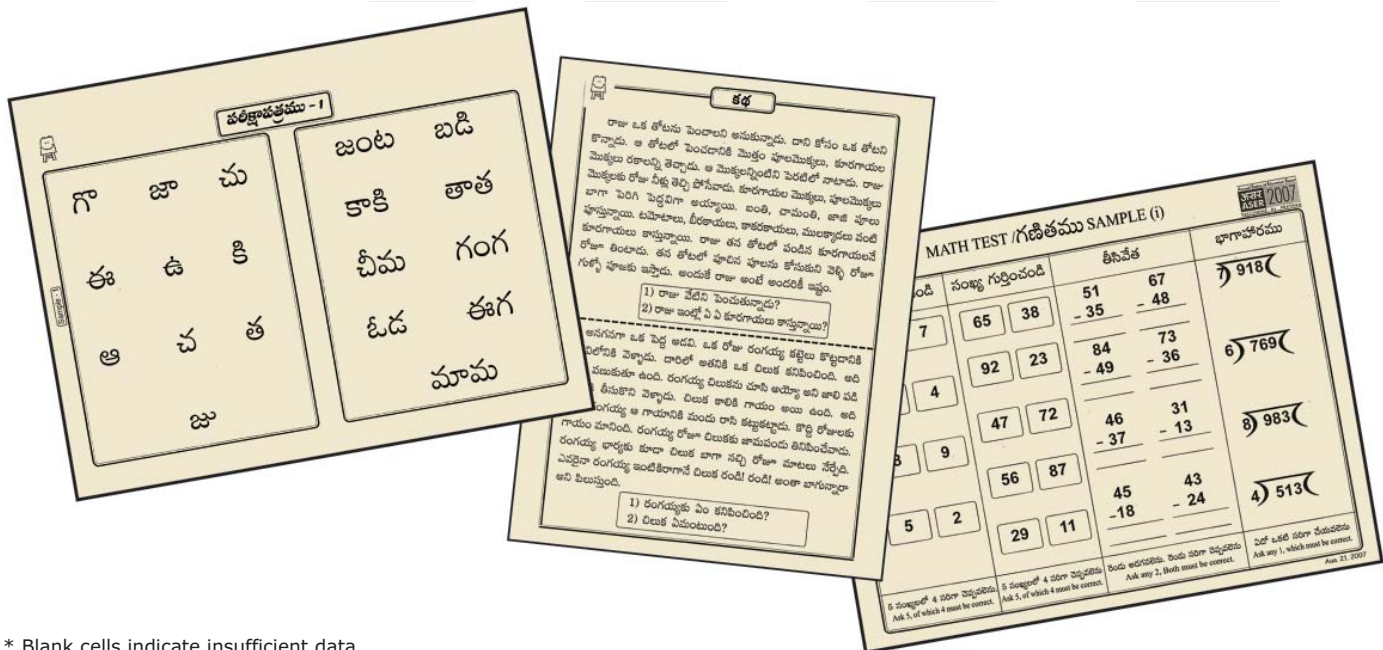
పెరుగుతుంది
 సుగంధి
 బంధువులు
 బి.ఎస్.ఎక్స్ బెగంపల్లి

యన్న బాబి వీర గౌరవ
 రామయ్య
 శేఖర్
 బొన కి
 కమల

నానా బాబి పెరిగి పాఠశాల రాజ్ కిని
 తుంటుంది పెరిగి పాఠశాల రాజ్ కిని
 వీటగా ప్రాంతాలు నానా వివరాలు తెలుపు
 తుంటుంది నానా

Performance of districts

District	Pre- school	Out of school	Private school	Std 1-2 : Learning levels			Std 3-5 : Learning levels		
	% Children (Age 3-4) in Anganwadi or other pre-school	% Children (Age 6-14) Out of school	% Children (Age 6-14) in Private school	% Children (Std 1-2) who CAN READ letters, words or more in OWN LANGUAGE	% Children (Std 1-2) who CAN RECOGNIZE NUMBERS (1-9) or more	% Children (Std 1-2) who CAN READ letters or more in ENGLISH	% Children (Std 3-5) who CAN READ Level 1 (Std 1) text or more in OWN LANGUAGE	% Children (Std 3-5) who CAN SUBTRACT or do more	% Children (Std 3-5) who CAN READ sentences in ENGLISH
Adilabad	61.7	6.2	26.2	75.0	80.2	46.1	59.4	47.1	16.8
Nizamabad	84.3	1.9	27.6	79.9	80.4	52.1	74.6	66.9	18.4
Karimnagar*		1.5	57.1	82.3	81.9	70.8	79.2	55.6	19.9
Medak	83.2	4.1	24.8	75.6	81.3	39.3	65.3	55.1	9.2
Rangareddy	71.9	2.6	36.4	76.3	88.7	63.4	55.9	53.4	20.2
Mahbubnagar	66.4	5.7	25.3	72.1	78.7	46.4	70.3	55.3	20.7
Nalgonda*		3.1	27.6	80.7	83.5	53.3	72.3	61.4	16.0
Warangal*		3.1	46.6	81.0	83.9	71.7	62.8	62.0	30.1
Khammam	75.9	4.7	28.7	84.4	84.4	62.2	70.5	53.3	11.0
Srikakulam	70.0	3.2	18.1	81.9	84.6	57.4	81.9	78.4	24.1
Vizianagaram	92.9	4.7	19.9	87.1	92.7	51.1	83.0	77.0	18.7
Visakhapatnam	89.6	3.5	18.6	73.6	74.9	49.4	65.0	53.4	18.6
East Godavari	89.6	3.2	26.9	80.9	86.7	53.4	76.7	58.8	21.7
West Godavari	68.3	7.1	31.9	86.3	94.5	67.0	71.4	58.1	26.7
Krishna	83.6	2.8	28.0	84.7	92.8	68.2	85.9	67.6	33.8
Guntur	82.0	5.4	34.9	83.9	87.9	53.2	83.9	70.4	26.9
Prakasam	75.3	4.9	24.3	84.1	88.4	63.1	74.5	77.7	21.3
Nellore	83.2	4.4	24.1	82.0	84.8	42.5	79.8	70.7	13.2
Cuddapah	80.5	3.8	37.5	91.6	93.5	59.3	85.6	81.4	15.9
Kurnool	64.2	9.0	26.4	77.8	83.8	49.3	70.3	63.2	23.8
Anantapur	85.5	6.0	21.0	77.9	82.6	54.6	67.6	58.1	19.4
Chittoor	81.6	1.9	26.4	94.6	96.8	65.1	84.4	85.2	48.8
Total	78.8	4.3	29.3	81.3	85.6	56.2	74.7	64.3	21.9



* Blank cells indicate insufficient data.